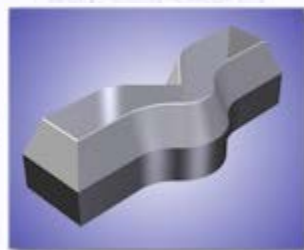


## CCSi ISO/IEC 17025 Certified Specimen Cutting Dies: Service, Calibration & Restoration



CCSi specializes in the complete restoration of all types of cutting dies. Our network of dedicated and certified machining and manufacturing facilities provide the most cost effective alternative to purchasing a new die.



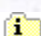
Most worn, deformed, severely nicked, or dulled cutting dies can be returned to new condition! Except in the most extreme cases, most dies can be ground flat and parallel, the proper cutting angle restored, and honed to the required specifications.


When a die cannot be restored, or when one of different specifications is required, CCSi can provide new **UltraLife** cutting dies.

Please visit the CCSi Equipment WebSite's [ASTM Specimen Dies](#) and [ISO & Other Specimen Dies](#) pages for the currently available selection of new cutting dies.

CCSi also provides custom manufactured dies for special applications and unique requirements!

CCSi Comprehensive Cutting Die Service Includes:

- Initial inspection;
- Initial inspection Report;
- Precision grinding of top and bottom surfaces to assure parallelism ;
- Precision machining of internal/external vertical surfaces to specifications ;
- Precision machining of cutting angle to specifications ;
- Precision honing (sharpening) of cutting surfaces;
- Hand polishing;
- Protective enamel coating of noncontact surfaces;
- Testing on specimens (included with calibration report);
- Final NIST traceable dimensional measurement inspection;
- Final calibration report;
- Certification to a *single* standard;
- NIST Certificate of Calibration conforming to the requirements of ISO/IEC 17025..

 Indicates an additional fee. These services are not generally required when sharpening a cutting die that is within dimensional tolerances.

At the time of cutting die calibration, alternative mounting apparatus may be added for an additional fee. These include mallet handles, press adapters, etc. This allows a cutting die, previously used for one application, to be placed into service for another ... a very cost effective alternative to purchasing a new cutting die!

### CCSi Specimen Cutting Dies: Typical Service & Calibration

Sharpening Service & Calibration	<a href="#">Please Submit a Request for Quotation (RFQ)</a>
<ul style="list-style-type: none"> <li>• Price is exclusive of services required to restore a die to dimensional tolerances.</li> <li>• Any additional charges for repairs are quoted upon completion of inspection.</li> <li>• An inspection fee of \$50.00 may be charged if the die is not serviced, or may be applied to the purchase of a new die.</li> </ul>	
NIST Traceable Certification conforming to the requirements of ISO/IEC 17025.	INCLUDED
<ul style="list-style-type: none"> <li>• Includes certification to a <i>single</i> standard.</li> <li>• Certifications to additional standards are \$60.00 each.</li> </ul>	
<b>Expedited Service is Available!</b>	

All Calibration Standards are traceable to the National Institute of Standards and Technology (NIST). The calibration services and reports provided will meet your ANSI, ASTM, DoD, EuroNorm (EN), ISO, ISO/IEC, MIL, and other international standards, as well as proprietary inter—company standards and customer/supplier requirements including those of automobile manufacturers.

The instrumentation used is regularly calibrated and maintained to the highest standards in accordance with all applicable standards, procedures and methods. The reports of maintenance and calibration are on file and available for inspection or may be provided for a nominal fee.

### ISO/IEC 17025 Accredited Laboratory

“This laboratory is accredited in accordance with the recognized International Standard ISO/IEC 17025:2005 General Requirements for the Competence of Testing and Calibration Laboratories. This laboratory also meets the additional program requirements in the field of calibration. This accreditation also demonstrates technical competence for a defined scope and the operation of a laboratory quality management system (refer to joint [ISO-ILAC-IAF Communiqué](#) dated 18 June 2005).”



[Calibration Certificate 1424.01](#)  
[Mechanical Testing Certificate 1424.02](#)

Index Terms: dies, cutting dies, specimen dies, specimen cutting dies, test specimens, test specimen dies, rubber dies, rubber cutting dies, laboratory dies, die service, die certification ISO 17025, ISO/IEC 17025, A2LA, die restoration, die grinding, die inspection, grinding, die machining, die certification, ASTM, ANSI, SAE, SPE, DIN, EN, BS

Copyright © 2013 CCSi, Inc. • All Rights Reserved • Published March, 2013

**Corporate Consulting, Service & Instruments, Incorporated**  
 University Park • 221 Beaver Street • Akron, Ohio 44304-1909 USA  
 Telephone: 800.742.8535 / 330.376.3600 • Facsimile: 800.229.9329 / 330.376.8500

[WWW.CCSI-INC.COM](http://WWW.CCSI-INC.COM) | 
 [WWW.CCSINSTRUMENTS.NET](http://WWW.CCSINSTRUMENTS.NET) | 
 [WWW.CCSEQUIPMENT.NET](http://WWW.CCSEQUIPMENT.NET) | 
 [WWW.ORECOZONE.NET](http://WWW.ORECOZONE.NET)